



Google Meet Etiquette Guide



"School is school": When learning/working from home, attending a class session, or attending extra help/office hour sessions, we should all commit to maintaining a school environment as best as possible. Here are some helpful guidelines for all Google Meet participants:



Be on time to class. Set an alarm 3 minutes before each of your classes to remind you.



When you are in a meet, you are "at school". Dress for success!



Find a quiet place for your meets, preferably at a desk or table.



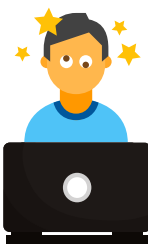
Be mindful of your background.



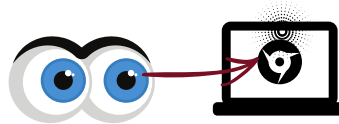
Camera angle is important. When possible, keep your camera at eye-level.



It is recommended to keep your camera on so teachers and students can engage with each other.



Try to stay in one place and keep your device stable so viewers don't get motion sick!



Eye Contact: Look into the camera on your device.



When deciding to comment or type in the chat, listen for teacher cues/directions.